

The Paul Field
AKA: The Springfield Charity Horse Show
5070 YEAZELL ROAD
SPRINGFIELD, OHIO 45502



4541562666 0025

THE PAUL FIELD
AKA: Springfield
Charity Horse Show
2015

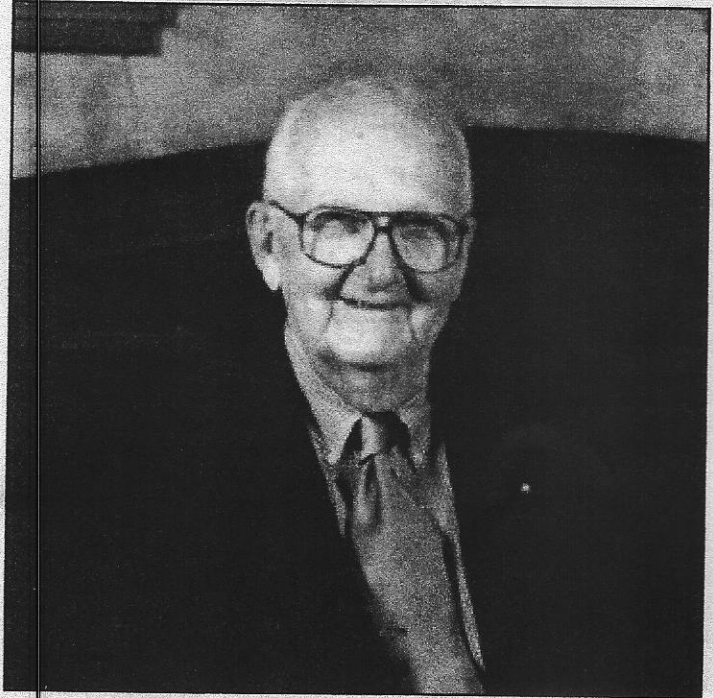
Indoor Arena

Indoor Arena

Tri-State Approved

Clark Co. Fairgrounds
Springfield, Ohio

Net proceeds to benefit
Community Mercy Med Assist
The only prescription program in
Clark and Champaign counties.



Paul Field
1912 - 2000

September 25-26-27

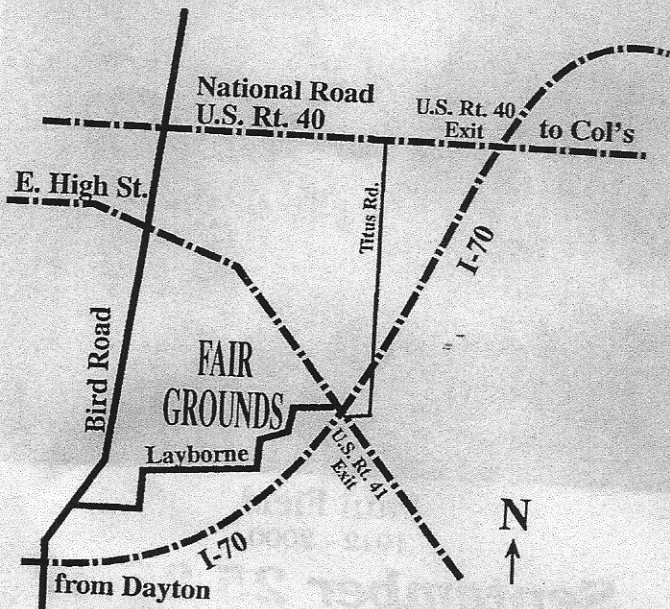
ENTRIES CLOSE SEPTEMBER 16, 2015
(Post Entries Accepted)

For Information Contact
Evette Moody
6168 Quinella Way
Dayton, OH 45459
937-623-7934

Chairman
Jack Hawkes
(937) 323-0377
Bus. (937) 206-0003

ENTER OFF OF LAYBORNE RD.

Exhibitor must enter
fairgrounds off of
Layborne Rd.



Do not use Main Entrance

OFFICIALS

— JUDGES —

Steve Crabtree Elizabethtown, KY

— RINGMASTER —

Tim Schubert Vienna, OH

— ANNOUNCER —

David Rice Bowling Green, OH

— STEWARD —

Evette Moody Dayton, OH

— ORGANIST —

Shannon Perkins Frankfort, KY

— VETERINARIAN —

Johnson Vet Clinic North Lewisburg, OH
Drs. Gayland & Grant Johnson, DVM

— PHOTOGRAPHER —

Terry Young Lexington, KY

— FARRIER —

Bud Hillshimer New Carlisle, OH

— BARN MANAGER —

TBA

— SECRETARY —

Evette Moody

6168 Quinella Way • Dayton, OH 45459

— APPROVED BY —

Ohio Am. Saddlebred Pleasure Horse Assoc. Inc.
Ohio Saddlebred Horse Association
Kyova Morgan Horse Association
Ohio Morgan Horse Association
Tri-State Horse Shows Association

Springfield Charity Horse Show RULES & REGULATIONS

This show will be guided by USEF Rules where applicable. Management reserved the right to make any judgements if necessary.

1. ENTRIES: Must be signed by owner, agent or parent (if exhibitor is a minor.) Give all necessary information. (Back numbers may be held if not given).

HORSE REGISTRATION NUMBERS AND REGISTRATION PAPERS MUST BE GIVEN WITH ENTRY OR AVAILABLE.

2. ENTRY FEES:

Halter & In Hand	\$7.00
Equitation & Academy	12.00
Equitation Champion	17.00
Performance	15.00
Performance Champion & Stake	22.00

*Entries postmarked after Sept. 15th will be charged a POST ENTRY FEE of \$10/horse.

3. ADMISSION TO GROUNDS: Thursday, Sept. 26nd.

4. CAMPER CHARGE: Pay directly to the fairgrounds upon arrival. A receipt sticker will be given to be placed on the windshield of your camper.

5. STALL FEES:

Horse Stall	75.00
Tack Stall	75.00
Ground Fee (pr. horse no stall)	30.00

Shavings are the bedding of choice - available for purchase

6. ENTRIES CLOSE SEPTEMBER 15TH: Full payment of entry and stall fees must be received with a completed SCHS entry form. SCHS will not accept post-dated or open checks. In the interest of fairness to all exhibitors, Telephone entries and stall reservations will not be accepted.

7. HOLDING OF CLASSES: Only those having classes back to back. Request forms available in Secretary Office and must be presented One Hour Before the Session in which entered.

8. CHAMPIONSHIP & STAKES: Must have entered, shown and judged in any appropriate class in the division.
MUST ENTER ONE HOUR BEFORE THE SESSION STARTS.

9. STATUS:

AMATEUR STATUS: All persons 18 years of age and over must be an amateur. Any class listed "Adult" is limited to amateurs 18 years and over.

- (A) **AMATEUR-OWNED-TRAINER-RIDER:** Adult, Jr. Exch. or member of said person's family. Leased horses are not eligible.
- (B) **JUNIOR EXHIBITOR:** Age of the Jr. Exh. on December 1, shall remain the same throughout the year.
- (C) **LIMIT:** Horses that have not won six (6) first place ribbons in the division in which it is being shown at a recognized show.
- (D) **NOVICE:** Horses that have not won (3) first place ribbons in the division in which it is being shown at a recognized show.

Rules & regulations (cont'd).

10. PREMIUM MONEY:

The Management has the right to pay back only entry fees in classes which four (4) or less entries are made

Classes	1st	2nd	3rd	4th	5th
Stake & Championships	\$50	\$40	\$30	\$20	\$10
Academy Classes & Halter	6 Ribbons				
Stake & Championship:	Trophy & 6 Ribbons				
Equitation Championship:	Trophy & 6 Ribbons				
William Shatner:	Belt Buckle & 6 Ribbons				

11. REFUNDS: Entry Fee refunds on veterinarian's certificate only.

12. RING PROCEDURE AND CONDUCT: Maximum of 2 minutes to enter the ring after the class is called and the first entrant is in the ring, will be allowed.

13. PROTESTS & COMPLAINTS: Will be handled by a committee designated by the Show Chairman.

14. SECRETARY'S OFFICE: Open Friday, September 27, at 9:00 AM

Net Proceeds to Benefit COMMUNITY MERCY MED ASSIST

SPONSORSHIPS

We would like to encourage our exhibitors, their families and friends to sponsor classes for the show if they so desire. We are a recognized charitable organization and all contributions are tax deductible.

Your sponsorship may be included with our entries or sent separately. Please fill out the information requested below so that we may properly credit you or your business for your help, and thank you at the show.

If you have a preference as to which division you would like to sponsor, please indicate below. We will honor requests for sponsorships or specific classes only if the class has no traditional sponsor and it has been previously subscribed for this year.

SPRINGFIELD CHARITY HORSE SHOW, 2015

I would like to sponsor the following:

FULL CL SS @ \$100 _____ CHAMPIONSHIP @ \$150 _____

RIBBONS @ \$40 _____ PATRON (ANY AMOUNT) _____

Paid by: check _____ cash _____ bill _____ Amount \$ _____

Company/Person _____

Street No./Apt. _____

City/State/Zip/Phone _____

Class Preference: 1. _____ 2. _____

THE SPRINGFIELD CHARITY HORSE SHOW PRIZE LIST

All Current USEF Rules Apply
AMERICAN SADDLEBRED DIVISION

*ASHAO Sweepstakes Class

FIVE GAITED SECTION

CLASS	FEE	
*49	\$15	JUNIOR EXHIBITOR
126	\$22	JUNIOR EXHIBITOR CHAMPONSHIP
*10	\$15	AMATEUR
80	\$22	AMATEUR CHAMPIONSHIP
*20	\$15	OPEN
*74	\$15	NOVICE/JUNIOR HORSE
133	\$22	OPEN CHAMPIONSHIP

THREE GAITED SECTION

CLASS	FEE	
*68	\$15	JUNIOR EXHIBITOR
119	\$22	JUNIOR EXHIBITOR CHAMPIONSHIP
* 1	\$15	AMATEUR
93	\$22	AMATEUR CHAMPIONSHIP
*13	\$15	OPEN
*65	\$15	NOVICE/JUNIOR HORSE
129	\$22	OPEN CHAMPIONSHIP

FINE HARNESS SECTION

CLASS	FEE	
* 9	\$15	OPEN
*45	\$15	AMATEUR
*61	\$15	NOVICE/JUNIOR HORSE
111	\$22	OPEN CHAMPIONSHIP

PARK SECTION

CLASS	FEE	
*3	\$15	PARK, FMT, AMATEUR
116	\$22	PARK, FMT, AMATEUR CHAMPIONSHIP
*51	\$15	PARK, FMT, OPEN
*78	\$15	PARK, FMT, NOVICE/JUNIOR HORSE
122	\$22	PARK, FMT, CHAMPIONSHIP
*70	\$15	PARK PLEASURE, AMATEUR
*84	\$15	PARK PLEASURE, OPEN
*48	\$15	PARK PLEAS., NOVICE/JUNIOR HORSE
128	\$22	PARK PLEASURE CHAMPIONSHIP
*17	\$15	PARK PLEASURE DRIVING
89	\$22	PARK PLEASURE DRIVING CHAMPIONSHIP

SHOW PLEASURE SECTION

CLASS	FEE	
* 7	\$15	SHOW PLEASURE, ADULT
*62	\$15	SHOW PLEASURE, AOT
53	\$15	SHOW PLEASURE, NOVICE
132	\$22	SHOW PLEASURE CHAMPIONSHIP
*72	\$15	SHOW PLEASURE, JR. EXHIBITOR
117	\$22	SHOW PLEASURE, JR. EXHIBITOR CHAMPIONSHIP
*64	\$15	SHOW PLEASURE DRIVING
125	\$22	SHOW PLEASURE DRIVING CHAMPIONSHIP
* 4	\$15	5 GAITED SHOW PLEASURE
46	\$15	5 GAITED SHOW PLEASURE, JR. EXB.
113	\$22	5 GAITED SHOW PLEASURE CHAMPIONSHIP

COUNTRY PLEASURE SECTION

CLASS	FEE	
* 75	\$15	COUNTRY PLEASURE DRIVING
120	\$22	COUNTRY PLEASURE DRIVING CHAMPIONSHIP
* 52	\$15	COUNTRY PLEASURE, JR. EXHIBITOR
115	\$22	COUNTRY PLEASURE, JR. EXH. CHAMPIONSHIP
* 5	\$15	HUNTER COUNTRY PLEASURE
69	\$15	SADDLE & BRIDLE ASB HUNT CLASSIC

110	\$22	HUNTER COUNTRY PLEASURE CHAMPIONSHIP
* 15	\$15	WESTERN COUNTRY PLEASURE
82	\$15	SADDLE & BRIDLE SHATNER WESTERN
123	\$22	WESTERN COUNTRY PLEASURE CHAMPIONSHIP
* 67	\$15	COUNTRY PLEASURE, ADULT
* 85	\$15	COUNTRY PLEASURE, AOT
11	\$15	COUNTRY PLEASURE, NOVICE
55	\$15	NATURAL 3 GTD. COUNTRY PLEASURE
130	\$22	COUNTRY PLEASURE CHAMPIONSHIP

IN HAND SECTION

CLASS	FEE	
* 43	\$7	ASB, OPEN
* 42	\$7	ASB, PLEASURE
* 41	\$7	ASB, 3 YRS. & UNDER

OTHER DIVISIONS

*ASHAO SWEEPSTAKES CLASS

HACKNEY PONY DIVISION

CLASS	FEE	
50	\$15	PLEASURE DRIVING, JR. EXHIBITOR (AHHS MEDALLION)
* 21	\$15	PLEASURE DRIVING, ADULT (AHHSF)
90	\$22	PLEASURE DRIVING CHAMPIONSHIP
* 16	\$15	COUNTRY PLEASURE DRIVING (AHHSF)
31	\$22	COUNTRY PLEASURE DRIVING CHAMPIONSHIP
8	\$15	HARNESS PONY, OPEN (AHHSF)
76	\$22	HARNESS PONY CHAMPIONSHIP
2	\$15	HACKNEY PONY, OPEN (AHHSF)
36	\$22	HACKNEY PONY CHAMPIONSHIP

ROADSTER DIVISION

CLASS	FEE	
*57	\$15	ROADSTER PONY, ADULT (AHHSF)
66	\$15	ROADSTER PONY, JR. EXHIBITOR (AHHS MEDALLION)
131	\$22	ROADSTER PONY CHAMPIONSHIP

MORGAN DIVISION

CLASS	FEE	
63	\$15	WESTERN PLEASURE
118	\$22	WESTERN PLEASURE CHAMPIONSHIP
4	\$15	ENGLISH PLEASURE
38	\$22	ENGLISH PLEASURE CHAMPIONSHIP
73	\$15	PLEASURE DRIVING
114	\$22	PLEASURE DRIVING CHAMPIONSHIP
54	\$15	HUNTER PLEASURE
108	\$22	HUNTER PLEASURE CHAMPIONSHIP
19	\$15	CLASSIC PLEASURE UNDER SADDLE
94	\$22	CLASSIC PLEASURE SADDLE CHAMPIONSHIP
6	\$15	CLASSIC PLEASURE DRIVING
33	\$22	PLEASURE DRIVING CHAMPIONSHIP

EQUITATION DIVISION

CLASS	FEE	
*79	\$12	LEADLINE, 6 & UNDER
*44	\$12	SADDLESEAT, WALK/TROT, 10 & UNDR
124	\$17	SADDLESEAT WALK/TROT CHMPIONSHIP
*59	\$12	SADDLESEAT, PLEASURE, 17 & UNDER
121	\$17	SADDLESEAT, PLEASURE CHMPIONSHIP
*36	\$12	SADDLESEAT, 17 & UNDER
*77	\$12	SADDLESEAT, ADULT
112	\$17	SADDLESEAT CHAMPIONSHIP

ACADEMY EQUITATION DIVISION

CLASS	FEE	
102	\$12	WALK/TROT, 14 & OVER
103	\$12	WALK/TROT, 11-13 YEARS
104	\$12	WALK/TROT, 10 & 9 YRS. OLD
105	\$12	WALK/TROT, 8 & UNDER

106	\$17	WALK/TROT, 11 & OVER CHAMPIONSHIP
107	\$17	WALK/TROT, 10 & UNDER CHAMPIONSHIP
95	\$12	WALK/TROT/CANTER, 18 & OVER
96	\$12	WALK/TROT/CANTER, 15 -17 YEARS
97	\$12	WALK/TROT/CANTER, 13 & 14 YEARS
98	\$12	WALK/TROT/CANTER, 11 & 12 YEARS
99	\$12	WALK/TROT/CANTER, 10 & UNDER
100	\$17	WALK/TROT/CANTER 13 & OVER CHMP
101	\$17	WALK/TROT/CANTER 12 & UNDER CHAMPIONSHIP

MISCELLANEOUS DIVISION

CLASS	FEE	
60	\$5	STICK HORSE
*58	\$15	OPEN PLEAS UDR SADDLE, 10&UDR, WLK/TROT
109	\$22	OPEN PLEASURE UNDER SADDLE, 10 & UNDER, WALK/TROT CHAMPIONSHIP
47	\$15	OPEN PLEAS. UDR SADDLE, ANY BREED
87	\$22	OPEN PLEASURE UNDER SADDLE,

ANY BREED CHAMPIONSHIP

12	\$15	OPEN PLEASURE PONY DRIVING
91	\$22	OPEN PLEASURE PONY DRIVING CHAMPIONSHIP
71	\$15	OPEN PLEAS DRIVING, ANY BREED
127	\$22	OPEN PLEAS DRIVING, ANY BREED CHAMPIONSHIP
*18	\$15	PARADE HORSE, OPEN
92	\$22	PARADE HORSE CHAMPIONSHIP

BUCKEYE SUMMER CURCUIT CHAMPIONSHIPS

To be qualified for these championships, a horse had to show at 3 or more qualifying shows and show in 6 classes in the division for which they are qualifying. They do not have to get a ribbon to be qualified. BSC Championship Entry fee: \$17 per class

22. ASB SHOW PLEASURE (BSC)
23. ASB THREE GAITED, OPEN (BSC)
24. MORGAN CLASSIC UNDER SADDLE (BSC)
25. ASB PARK HORSE, AMATEUR (BSC)
26. ASB WESTERN COUNTRY PLEASURE (BSC)
27. ASB FIVE GAITED SHOW PLEASURE (BSC)
28. SADDLESEAT EQUITATION, 17 & UNDER (BSC)
29. ASB PARK PLEASURE (BSC)
30. HACKNEY PLEASURE PONY (BSC)
31. ASB FIVE GAITED, AMATEUR/JR EXB (BSC)
32. PARADE HORSE, OPEN (BSC)
33. ASB FINE HARNESS, OPEN (BSC)
34. MORGAN ENGLISH PLEASURE (BSC)
35. ASB THREE GAITED, AMATEUR/JR EXB (BSC)
36. ASB HUNTER COUNTRY PLEASURE (BSC)
37. ASB PARK HORSE, OPEN (BSC)
38. OPEN ROAD PONY (BSC)
39. ASB COUNTRY PLEASURE (BSC)
40. ASB FIVE GAITED, OPEN (BSC)
24. MORGAN CLASSIC UNDER SADDLE (BSC)
25. ASB PARK HORSE, AMATEUR (BSC)
26. ASB WESTERN COUNTRY PLEASURE (BSC)
27. ASB FIVE GAITED SHOW PLEASURE (BSC)
28. SADDLESEAT EQUITATION, 17 & UNDER (BSC)
29. ASB PARK PLEASURE (BSC)
30. HACKNEY PLEASURE PONY (BSC)
31. ASB FIVE GAITED, AMATEUR/JR EXB (BSC)
32. PARADE HORSE, OPEN (BSC)
33. ASB FINE HARNESS, OPEN (BSC)
34. MORGAN ENGLISH PLEASURE (BSC)
35. ASB THREE GAITED, AMATEUR/JR EXB (BSC)
36. ASB HUNTER COUNTRY PLEASURE (BSC)
37. ASB PARK HORSE, OPEN (BSC)
38. OPEN ROAD PONY (BSC)
39. ASB COUNTRY PLEASURE (BSC)
40. ASB FIVE GAITED, OPEN (BSC)

THE PAUL FIELD CHARITY HORSE SHOW

FOR INFORMATION: Jack Hawkes at 937-206-0003
or Evette Moody at 937-623-7934

SEPTEMBER 25-26-27, 2015

CLARK COUNTY FAIRGROUNDS, SPRINGFIELD, OH

JUDGE: Steve Crabtree

*ASHAO Sweepstakes Class

FRIDAY AFTERNOON 1:00PM

1. *ASB THREE GAITED, AMATEUR
2. HACKNEY PONY, OPEN (AHHSF)
3. *ASB THREE GTD. PARK. FMT, AMATEUR
4. *ASB FIVE GAITED SHOW PLEASURE
5. *ASB HUNTER COUNTRY PLEASURE
6. MORGAN CLASSIC PLEASURE DRIVING
7. *ASB SHOW PLEASURE, ADULT
8. HACKNEY HARNESS PONY, OPEN (AHHSF)
9. *ASB FINE HARNESS, OPEN
10. *ASB FIVE GAITED, AMATEUR
11. ASB COUNTRY PLEASURE, NOVICE
12. OPEN PLEASURE PONY DRIVING
13. *ASB THREE GAITED, OPEN
14. MORGAN ENGLISH PLEASURE
15. *ASB WESTERN COUNTRY PLEASURE
16. *HACKNEY COUNTRY PLEASURE DRIVING (AHHSF)
17. *ASB PARK PLEASURE DRIVING
18. *PARADE HORSE, OPEN
19. MORGAN CLASSIC UNDER SADDLE
20. *ASB FIVE GAITED, OPEN
21. *HACKNEY PLEASURE DRIVING, ADULT (AHHSF)

FRIDAY EVENING 6:30PM

BUCKEYE SUMMER CURCUIT CHAMPIONSHIPS

22. ASB SHOW PLEASURE (BSC)
23. ASB THREE GAITED, OPEN (BSC)
24. MORGAN CLASSIC UNDER SADDLE (BSC)
25. ASB PARK HORSE, AMATEUR (BSC)
26. ASB WESTERN COUNTRY PLEASURE (BSC)
27. ASB FIVE GAITED SHOW PLEASURE (BSC)
28. SADDLESEAT EQUITATION, 17 & UNDER (BSC)
29. ASB PARK PLEASURE (BSC)
30. HACKNEY PLEASURE PONY (BSC)
31. ASB FIVE GAITED, AMATEUR/JR EXB (BSC)
32. PARADE HORSE, OPEN (BSC)
33. ASB FINE HARNESS, OPEN (BSC)
34. MORGAN ENGLISH PLEASURE (BSC)
35. ASB THREE GAITED, AMATEUR/JR EXB (BSC)
36. ASB HUNTER COUNTRY PLEASURE (BSC)
37. ASB PARK HORSE, OPEN (BSC)
38. OPEN ROAD PONY (BSC)
39. ASB COUNTRY PLEASURE (BSC)
40. ASB FIVE GAITED, OPEN (BSC)

SATURDAY MORNING 9:30AM

41. *ASB IN HAND, 3 YRS. OLD & UNDER
42. *ASB IN HAND, PLEASURE
43. *ASB IN HAND, OPEN
44. *SADDLESEAT EQ. WALK/TROT, 10 & UNDER
45. *ASB FINE HARNESS, AMATEUR
46. ASB FIVE GTD. PLEASURE, JUNIOR EXHIBITOR
47. OPEN PLEASURE SADDLE, ANY BREED
48. *ASB PARK PLEASURE, NOVICE/JUNIOR HORSE
49. *ASB FIVE GAITED, JR. EXHIBITOR
50. HACKNEY PONY PLEAS DRVG, JR EXB (AHHS MEDAL)
51. *ASB THREE GTD. PARK. FMT, OPEN
52. *ASB COUNTRY PLEASURE, JUNIOR EXHIBITOR
53. ASB SHOW PLEASURE, NOVICE
54. MORGAN HUNTER PLEASURE, OPEN
55. ASB NATURAL THREE GTD. COUNTRY PLEASURE
56. *SADDLESEAT EQUITATION, 17 & UNDER
57. *ROADSTER PONY, ADULT (AHHSF)
58. *OPEN PLEAS UNDER SADDLE, 10 & UNDR. WLK/TROT
59. *SADDLESEAT EQUIT., PLEASURE, 17 & UNDER

SATURDAY AFTERNOON 1:00PM

60. STICK HORSE, 6 & UNDER
61. *ASB FINE HARNESS, NOVICE/JUNIOR HORSE
62. *ASB SHOW PLEASURE, AOT
63. MORGAN WESTERN PLEASURE, OPEN
64. *ASB SHOW PLEASURE DRIVING
65. *ASB THREE GAITED, NOVICE/JUNIOR HORSE
66. HACKNEY ROADSTER, JR EXH. (AHHS MEDALLION)
67. *ASB COUNTRY PLEASURE, ADULT
68. *ASB THREE GAITED, JUNIOR EXHIBITOR
69. SADDLE & BRIDLE ASB HUNT SEAT CLASSIC
70. *ASB PARK PLEASURE, AMATEUR
71. OPEN PLEASURE DRIVING, ANY BREED
72. ASB SHOW PLEASURE, JUNIOR EXHIBITOR
73. MORGAN PLEASURE DRIVING, OPEN
74. *ASB FIVE GAITED, NOVICE/JUNIOR HORSE
75. *ASB COUNTRY PLEASURE DRIVING
76. HACKNEY HARNESS PONY STAKE
77. *SADDLESEAT EQUITATION, ADULT
78. *ASB 3 GTD. PARK, FMT, NOVICE/JUNIOR HORSE

SATURDAY EVENING 6:30PM

79. *LEADLINE, 6 & UNDER
80. ASB 5 GTD. AMATEUR CHAMPIONSHIP
81. HACKNEY COUNTRY PLEASURE DRIVING STAKE
82. SADDLE & BRIDLE SHATNER WSTRN PLEASURE
83. MORGAN CLASSIC PLEASURE DRIVING STAKE
84. *ASB THREE GTD. PARK PLEASURE, OPEN
85. *ASB COUNTRY PLEASURE, AOT
86. HACKNEY PONY STAKE
87. OPEN PLEASURE UNDER SADDLE, ANY BREED STAKE
88. MORGAN ENGLISH PLEASURE STAKE
89. ASB PARK PLEASURE DRIVING STAKE
90. HACKNEY PONY PLEASURE DRIVING STAKE
91. OPEN PLEASURE PONY DRIVING STAKE
92. PARADE HORSE STAKE
93. ASB THREE GTD. AMATEUR CHAMPIONSHIP
94. MORGAN CLASSIC SADDLE STAKE

SUNDAY MORNING 9:30AM

95. ACADEMY WLK/TRT/CANTER, 18 & OVER
96. ACADEMY WLK/TRT/CANTER, 15-17 YRS.
97. ACADEMY WLK/TRT/CANTER, 13 & 14 YRS.
98. ACADEMY WLK/TRT/CANTER, 11 & 12 YRS.
99. ACADEMY WLK/TRT/CANTER, 10 & UNDER
100. ACADEMY WLK/TRT/CANTER 13 & OVER CHAMP.
101. ACADEMY WLK/TRT/CANTER 12 & UNDER CHMP
102. ACADEMY WALK/TROT, 14 & OVER
103. ACADEMY WALK/TROT, 11-13 YRS.
104. ACADEMY WALK/TROT, 9 & 10 YRS.
105. ACADEMY WALK/TROT, 8 & UNDER
106. ACADEMY WALK/TROT, 11 & OVER CHAMP.
107. ACADEMY WALK/TROT, 10 & UNDER CHAMP.

SUNDAY AFTERNOON 1:00PM

108. MORGAN HUNTER PLEASURE STAKE
109. OPEN PLEAS. SADDLE, 10 & UNDR, WK/TRT STK
110. ASB HUNTER PLEASURE CHAMPIONSHIP
111. ASB FINE HARNESS STAKE
112. SADDLESEAT EQUITATION CHAMPIONSHIP
113. ASB FIVE GAITED PLEASURE STAKE
114. MORGAN PLEASURE DRIVING STAKE
115. ASB COUNTRY PLEASURE JUNIOR EXB. STAKE
116. ASB THREE GTD. PARK, FMT, AMATEUR STAKE
117. ASB SHOW PLEASURE JUNIOR EXB. STAKE
118. MORGAN WESTERN PLEASURE STAKE
119. ASB THREE GTD., JUNIOR EXHIBITOR STAKE
120. ASB COUNTRY PLEASURE DRIVING STAKE
121. SADDLESEAT EQUIT., PLEASURE CHAMPIONSH
122. ASB THREE GTD. PARK, FMT STAKE
123. ASB WESTERN PLEASURE CHAMPIONSHIP
124. SADDLESEAT EQ. 10 & UND WALK/TROT CHAMP
125. ASB SHOW PLEASURE DRIVING STAKE
126. ASB FIVE GAITED JR. EXHIBITOR STAKE
127. OPEN PLEASURE DRIVING STAKE
128. ASB 3 GTD. PARK PLEASURE STAKE
129. ASB THREE GAITED STAKE
130. ASB COUNTRY PLEASURE CHAMPIONSHIP
131. HACKNEY ROADSTER PONY CHAMPIONSHIP
132. ASB SHOW PLEASURE CHAMPIONSHIP
133. ASB FIVE GAITED STAKE



Preferred Hotels

Quality Inn Springfield
Springfield, Ohio
(937) 323-8631
383 W. Leffel Lane

Courtyard By Marriott
Springfield Downtown
(937) 471-9008
100 S. Fountain Ave.

Comfort Suites
Springfield, Ohio
(937) 322-0707
121 Raydo

Hampton Inn Springfield
Springfield, Ohio
(937) 325-8480
101 W. Leffel Lane

Super 8 Motel
Springfield, Ohio
(937) 324-5501
2 W. Leffel Lane

Red Roof Inn
Springfield, Ohio
(937) 325-5356
115 W. Leffel Lane

SHARPEN-ALL

available for sharpening and clipper
repair during the show

- Karl Hoppe
Owner